



Marquez Elementary School Reconstruction Project

Community Meeting

June 6, 2025

Agenda

- Welcome, Meeting Logistics, Community Relations Engagement Plan

Lorena Padilla-Melendez, Director, Community Relations, LAUSD

- Campus Reconstruction Projects, Marquez Elementary Rebuild Project Scope, Anticipated Timeline

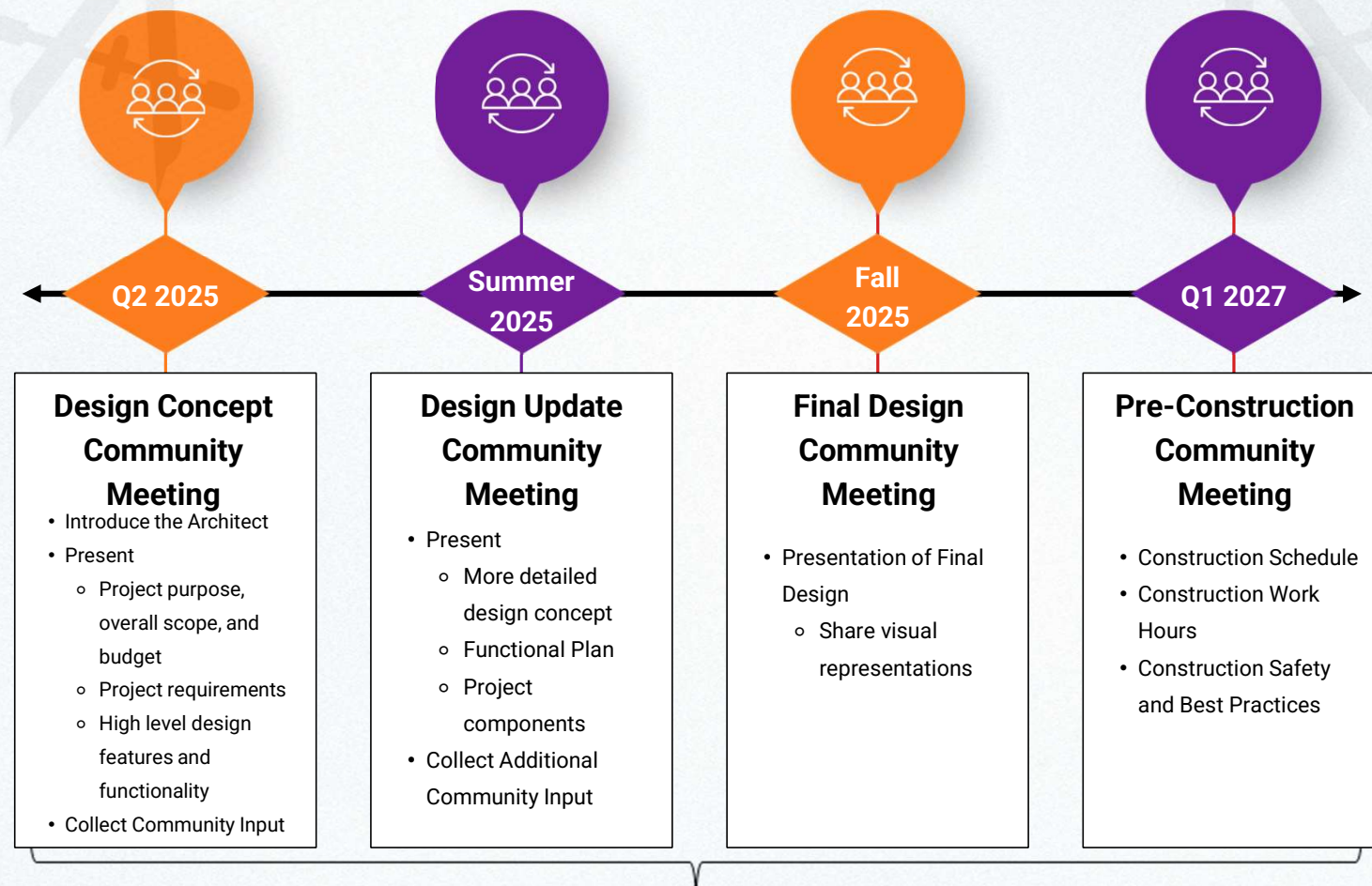
Issam Dahdul, Director of Facilities Planning & Development, Asset Management, LAUSD

- Preliminary Design Concepts

Saif Vagh, Associate Principal, Architecture, NAC

- Questions

FSD Community Relations Engagement Plan for the Design Process



Stakeholder engagement will continue throughout the duration of the project.

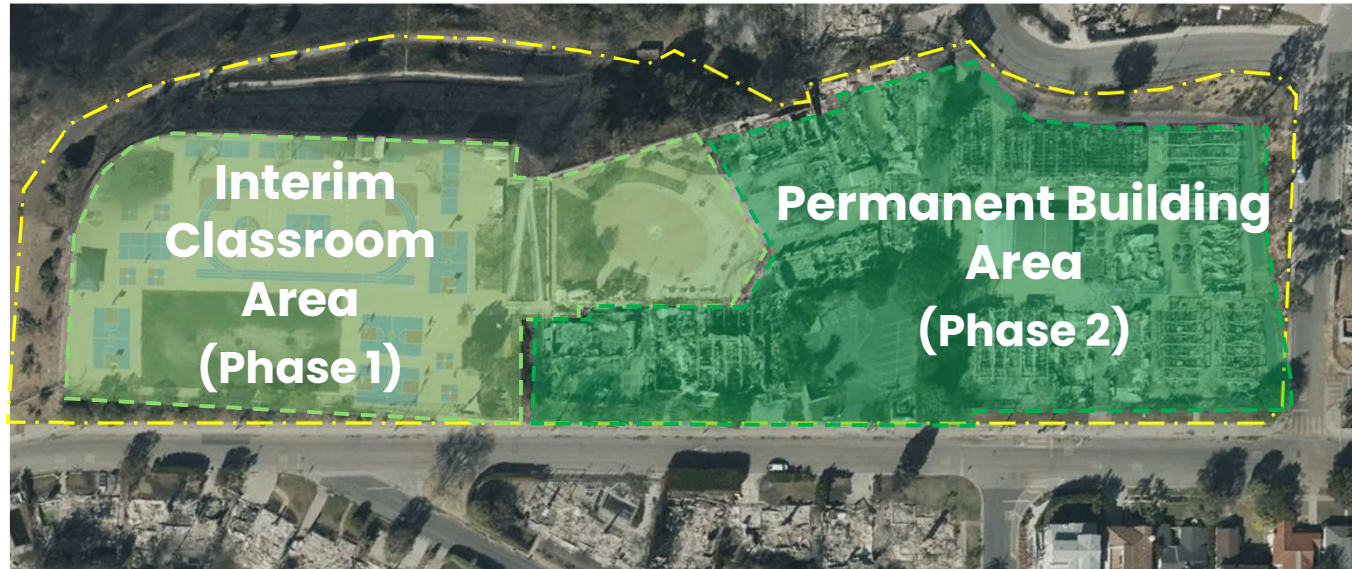
Campus Reconstruction Projects – Summary

- The January 2025 Palisades Fire caused an unprecedented loss of facilities due to fire damage, with significant impacts to Marquez Charter Elementary School, Palisades Charter Elementary School, and Palisades Charter High School.
- The proposed Projects have been developed to expedite the repopulation of the affected schools.
- These Projects replace facilities that were destroyed at each school.
- Both temporary and permanent facilities will be constructed to serve the student populations that were present prior to the fire at each school.
- The proposed Projects for **Marquez Charter Elementary School and Palisades Charter Elementary School** will be funded by the category of need for major modernizations, upgrades, and reconfigurations to school campuses.
- Anticipated Board Action: June 3, 2025.

Marquez ES Proposed Project

Project Scope:

- 22 new classrooms (general, TK/K, specialty), admin spaces, multipurpose room, library, food services, and maintenance facilities
- Infrastructure upgrades including utilities, landscape, and parking improvements
- Interim classrooms during design and construction of the permanent campus

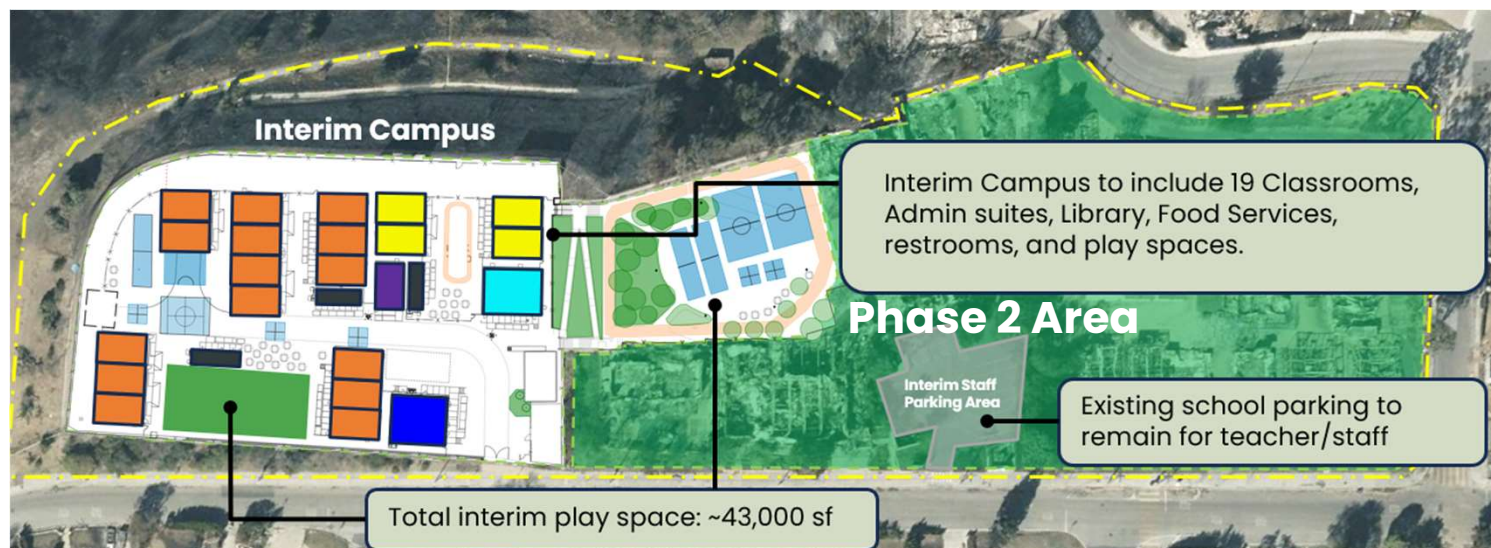


Total Project Budget ~\$202.6M

Marquez ES Proposed Project

Phase 1 Scope:

- Approx. 19 portable classrooms, admin and library in portables, mobile kitchen with shaded lunch area, and 3 portable restroom units.
- Installation of temporary infrastructure
- Site preparation for interim play areas and restoration of parking areas.



Anticipated Schedule

•Phase 1 Installation Start	Q2-2025
•Phase 1 Complete	Q3-2025
•Phase 2 Construction Start	Q1-2027
•Phase 2 Buildings Complete	Q4-2028
•Phase 2 Play Yard Complete	Q2-2029

Permanent Campus Program Overview

- New Classrooms
 - 15 General Classrooms (1st – 5th Grade)
 - 4 Kinder/TK
 - 2 Flexible Learning/Maker Space Classrooms
 - Parent Center
- Classroom Support Spaces
 - Collaboration Spaces, Teacher Workrooms, Storage, etc.
- Library
 - ~2,000 square feet
 - Designed for ~6,000 books
 - Storytelling steps

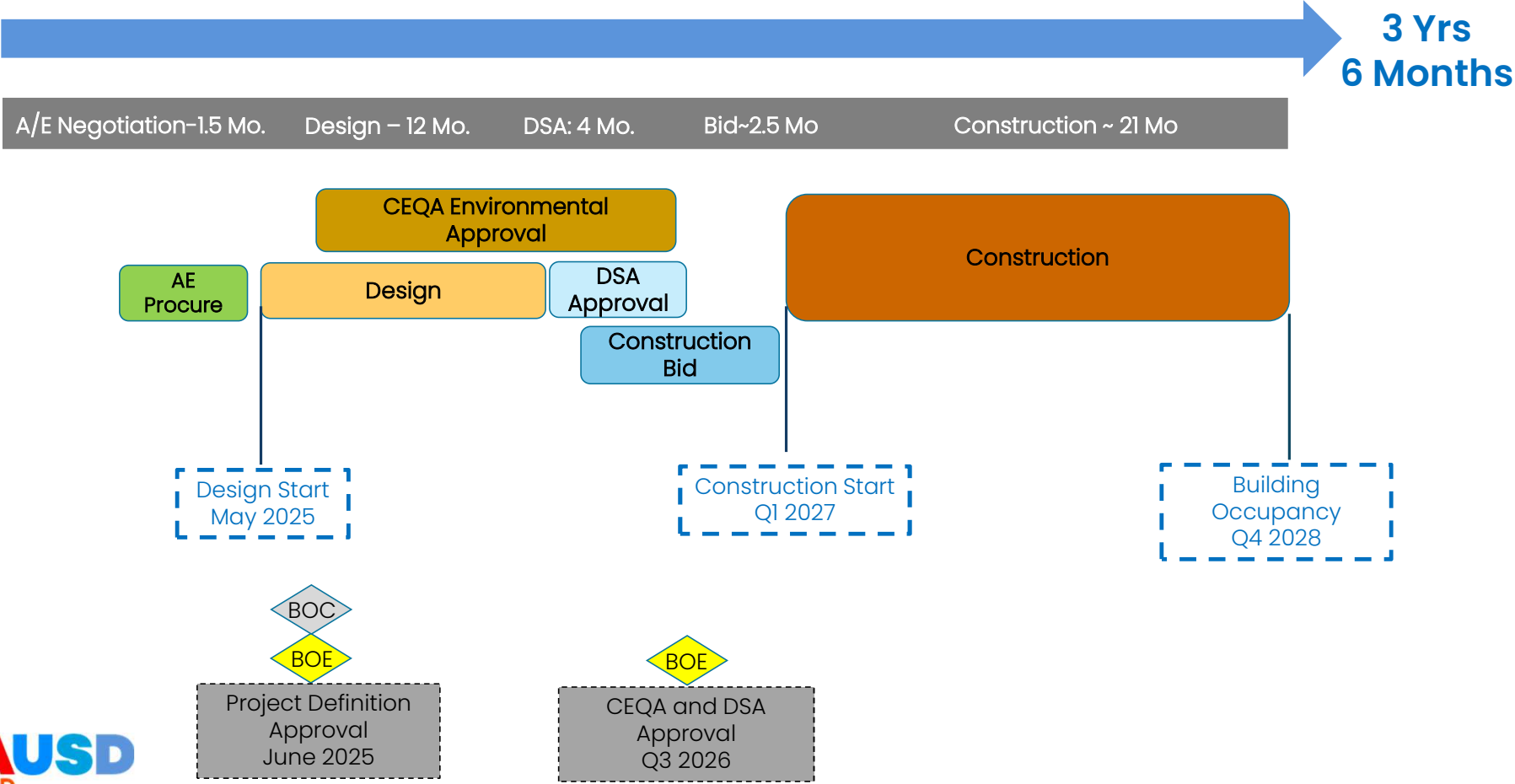
Permanent Campus Program Overview

- Administration
 - Reception, Offices, Health Unit, Speech Therapy, Psychologist Offices, IEP Conference Room, etc.
- Food Services
 - Kitchen for cooking and warming
 - Scramble Area
 - Faculty Lounge

Permanent Multipurpose Room

- Large than the Auditorium (~7,000 square feet)
- More Seating (~400 seats)
- Can be used for Indoor Dining - ~240 seats (*built-in folding tables and benches*)
- More Storage
- Pipe Grid Stage lighting and Built in projector with motorized projection screen
- Exterior roll up door at the back of the stage
- Flat floor allows for hosting events including book fairs, science fairs, meetings, etc.
- Use for PE during inclement weather

Anticipated Reconstruction Timeline



12-Month Design Milestones Overview

Preliminary Schematic Design Phase: ~2 months:

Initial Phase including continuing Due Diligence and Site Analysis, Programming, and development of initial design/massing options.
Community Meeting #1

Final Schematic Design Phase: ~2 months :

Development of site and floor plans, building massing, initial development of building engineering systems, and exterior environment for recommended Design Option including preliminary interior and exterior renderings.
Community Meeting #2

Design Development Phase: ~3 months :

Refinement of the Design with detailed plans, sections, elevations, and material and color selections. Development and Coordination of work by project engineers.
Community Meeting #3

50% Construction Document Phase: ~2.5 months :

Initial Construction Documentation development of plans, details, specifications as required for agency permitting and construction. Technical Reviews by LAUSD Staff to ensure compliance of design with LAUSD Standards.

100% Construction Document Phase: ~2.5 months

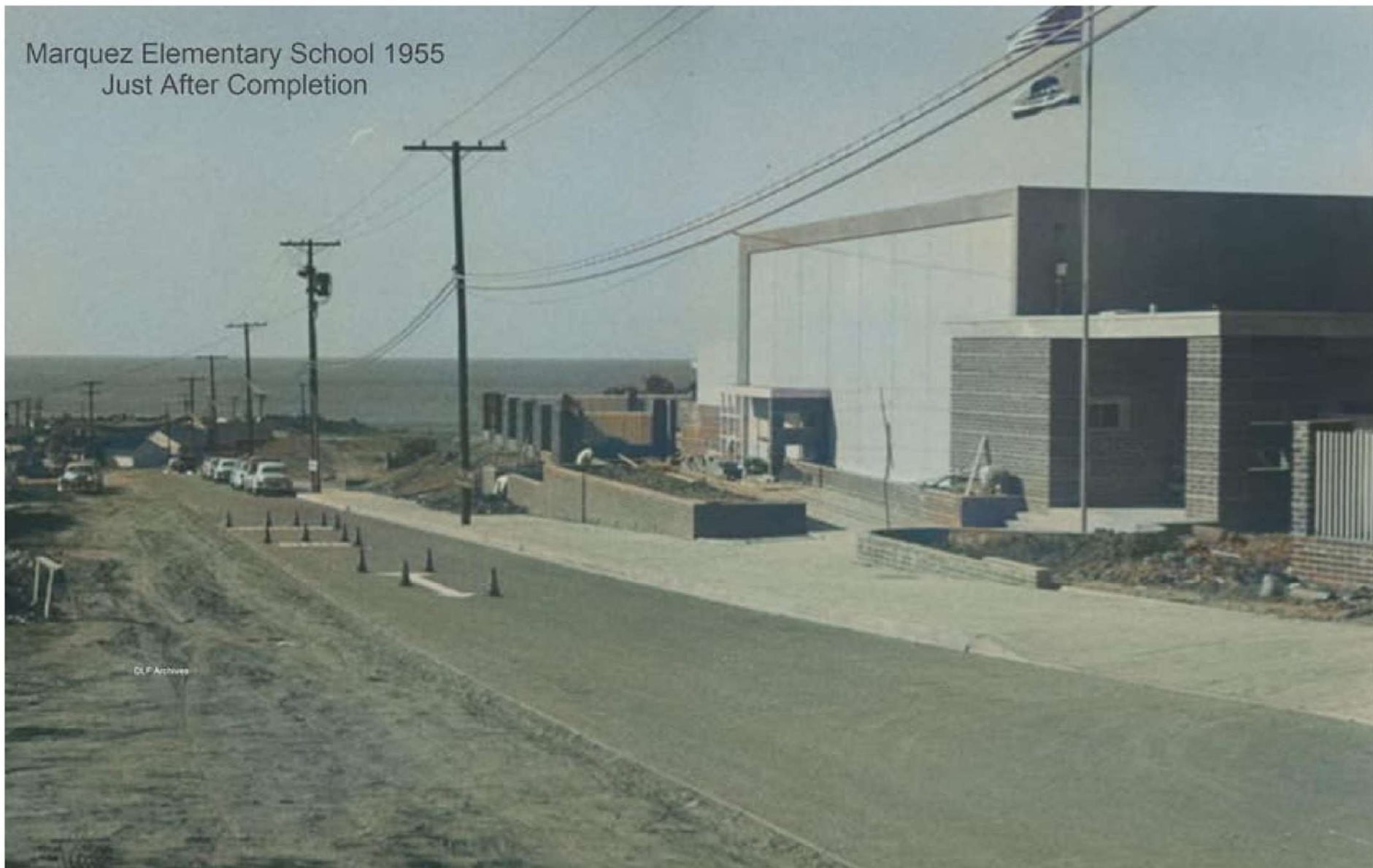
Final Construction Documentation development of plans, details, specifications as required for agency permitting and construction. Submittal to the Division of the State Architect (DSA) for plan check approvals at the Conclusion of this Phase.

Marquez Charter Elementary School

MEET THE ARCHITECT MEETING
JUNE 6, 2025

NAC

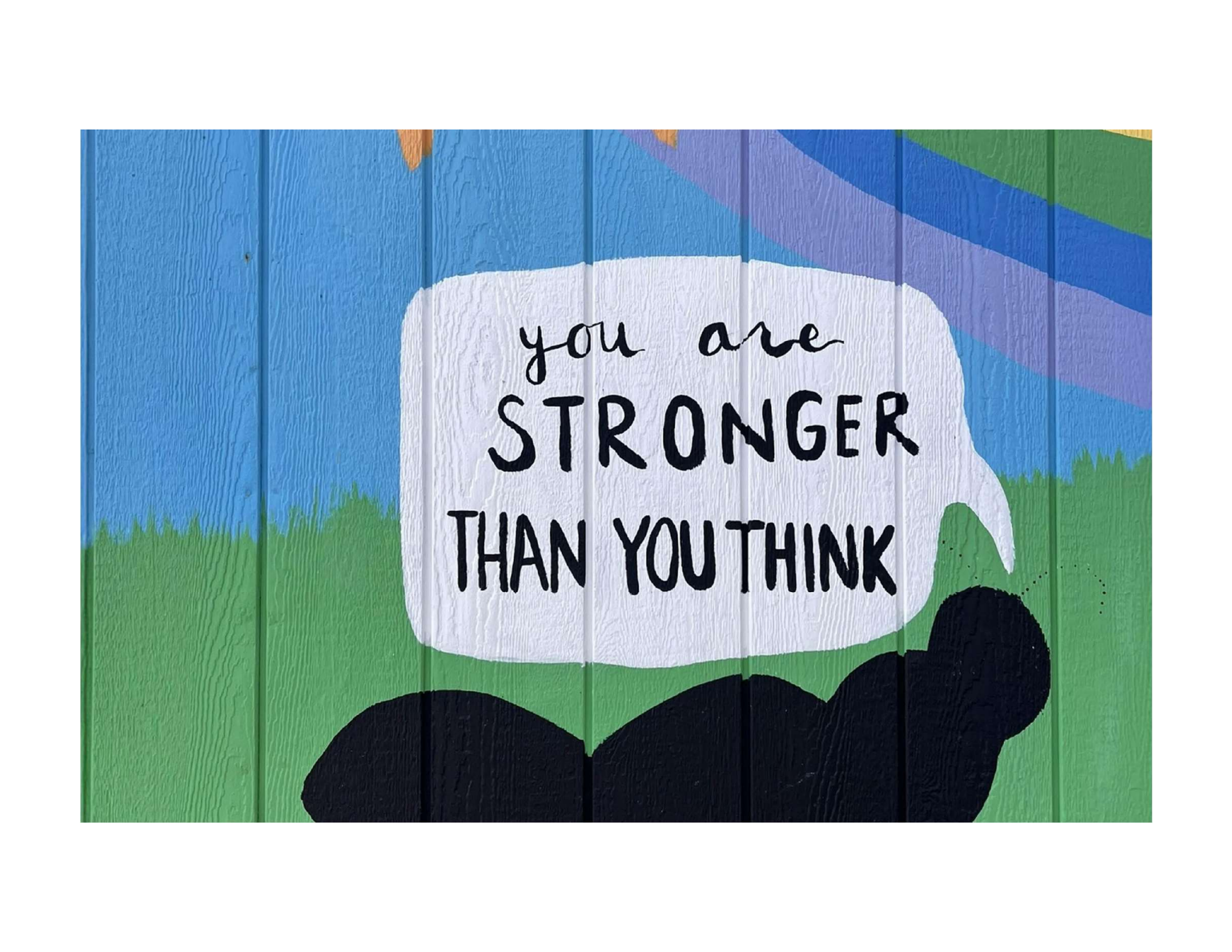
Marquez Elementary School 1955
Just After Completion



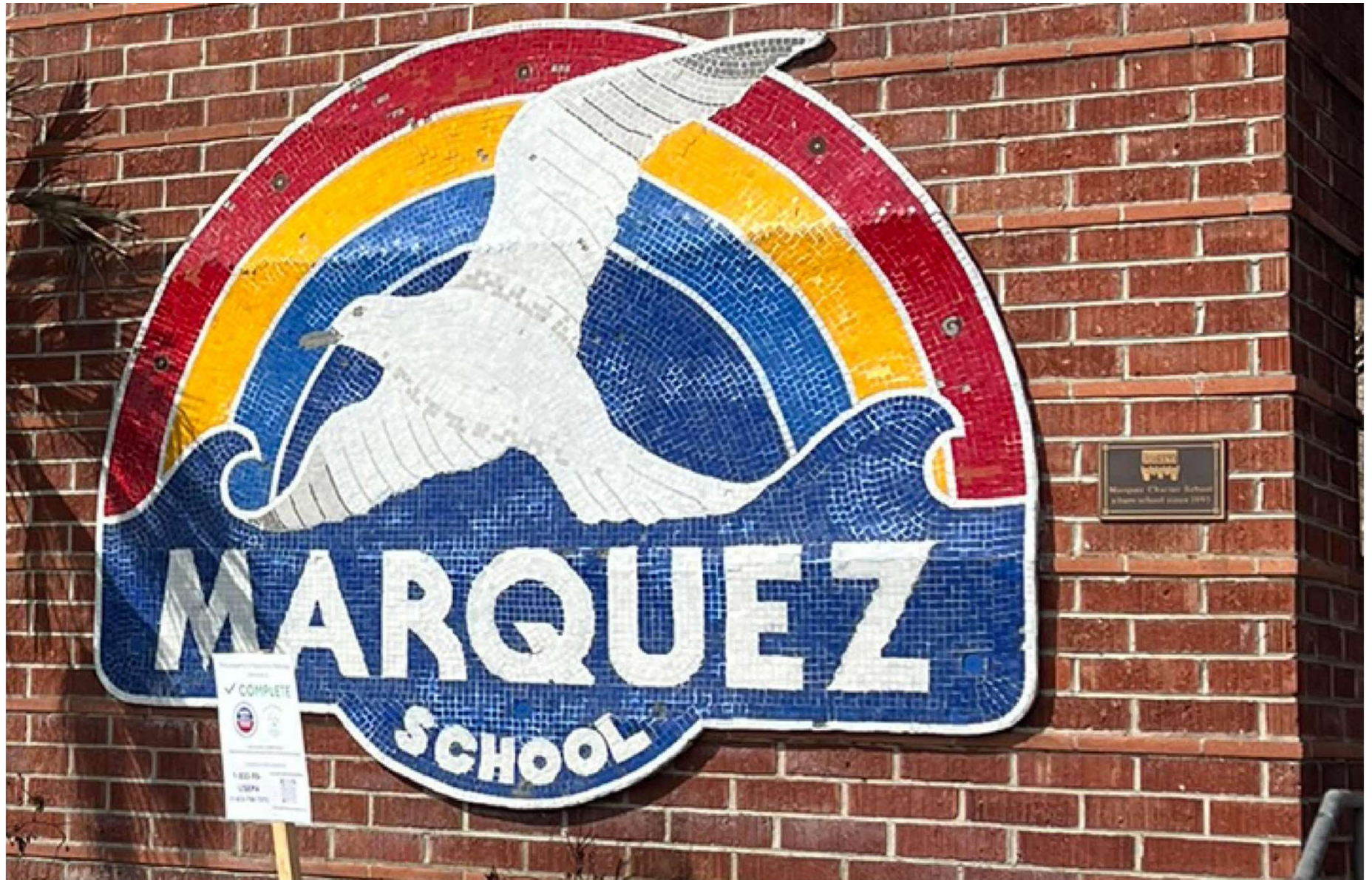
DLF Archives



OPENING DAY 1955

The image features a motivational poster. A white, torn-edge speech bubble is centered on a background of vertical wooden planks. The planks are painted in a vibrant, abstract pattern of blue, purple, green, and black. The text inside the bubble is written in a mix of cursive and bold, sans-serif fonts. The background also includes a green grassy area at the bottom and a black silhouette of a person's head and shoulders at the very bottom.

you are
STRONGER
THAN YOU THINK











Who is NAC Architecture

- Educational facilities designed in 32 states.
- Combining education research and design.
- 50+ years of California school design
- Specializing in design with construction logistics challenges.
- Hundreds of significant design awards.



MALIBU HIGH SCHOOL, AERIAL VIEW

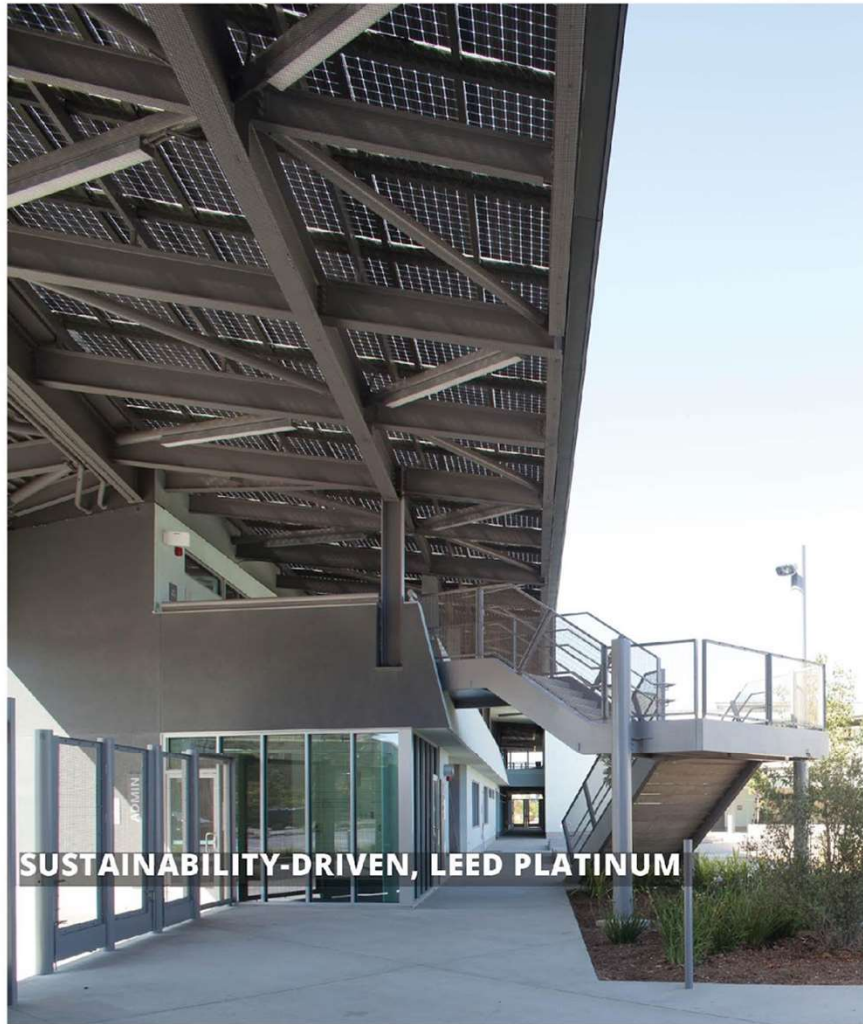


DESIGN DRIVEN BY RESILIENCY & SUSTAINABILITY





PLAYA VISTA ELEMENTARY, AERIAL VIEW



SUSTAINABILITY-DRIVEN, LEED PLATINUM



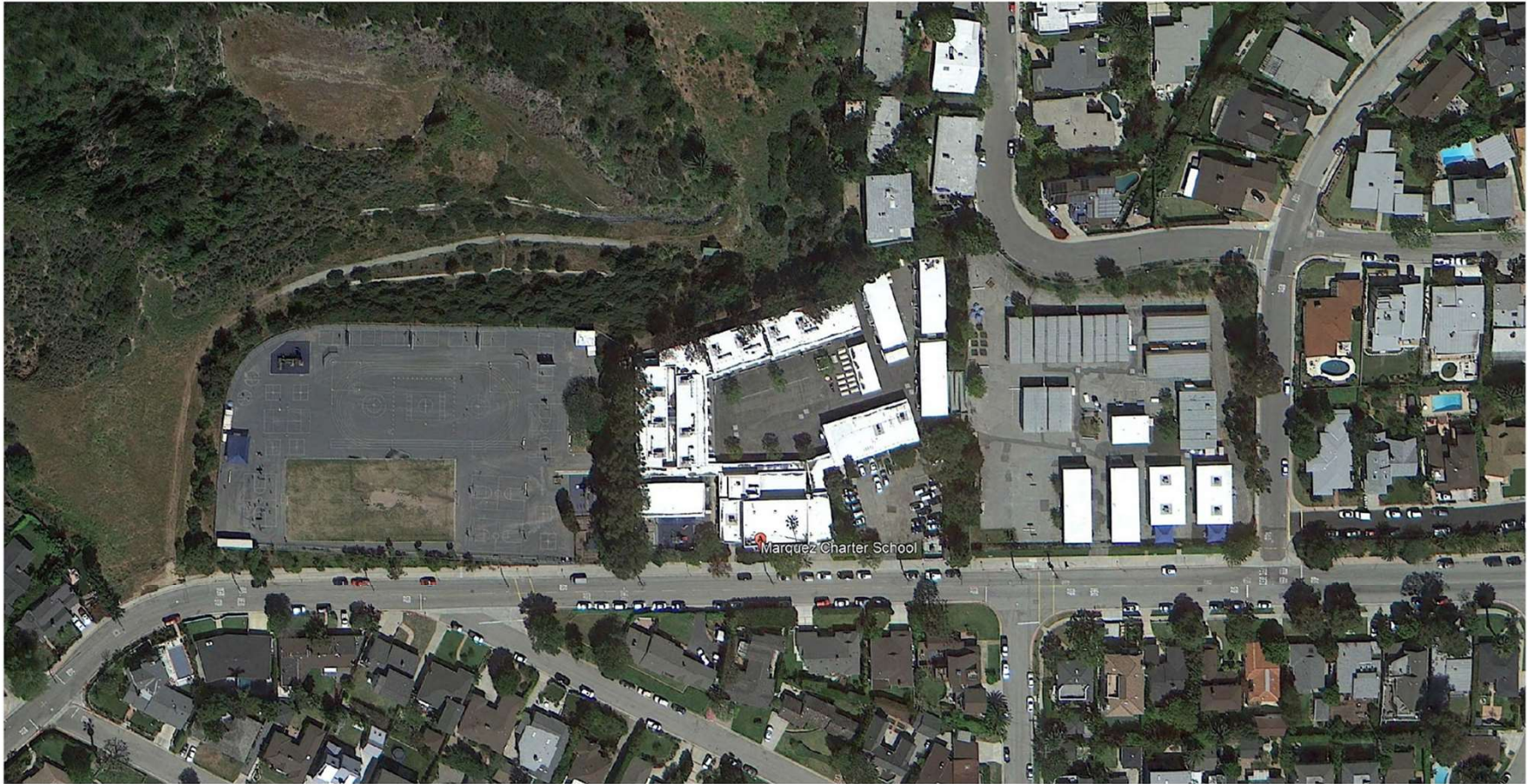


COASTAL CLIMATE, EMBRACING NATURE

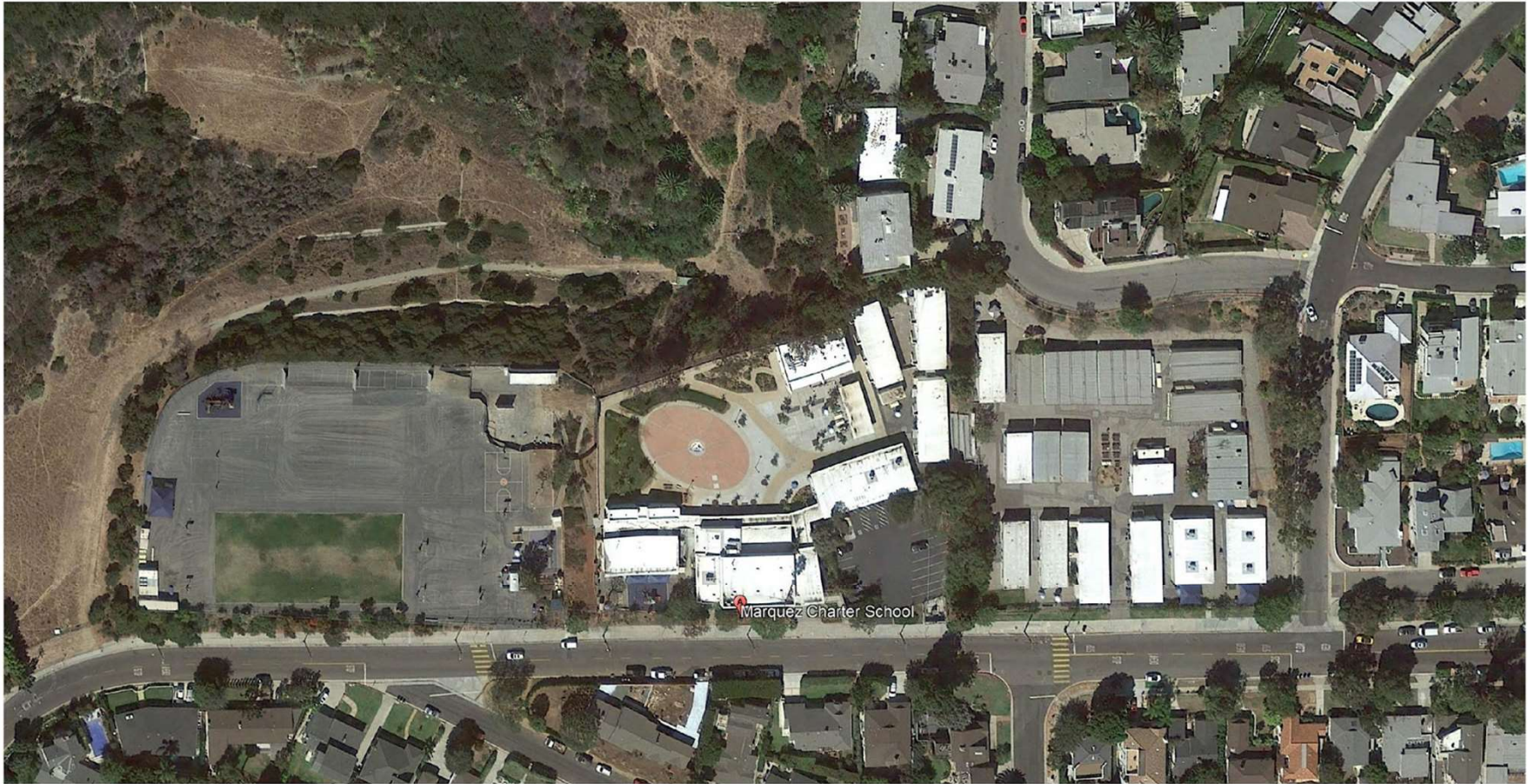




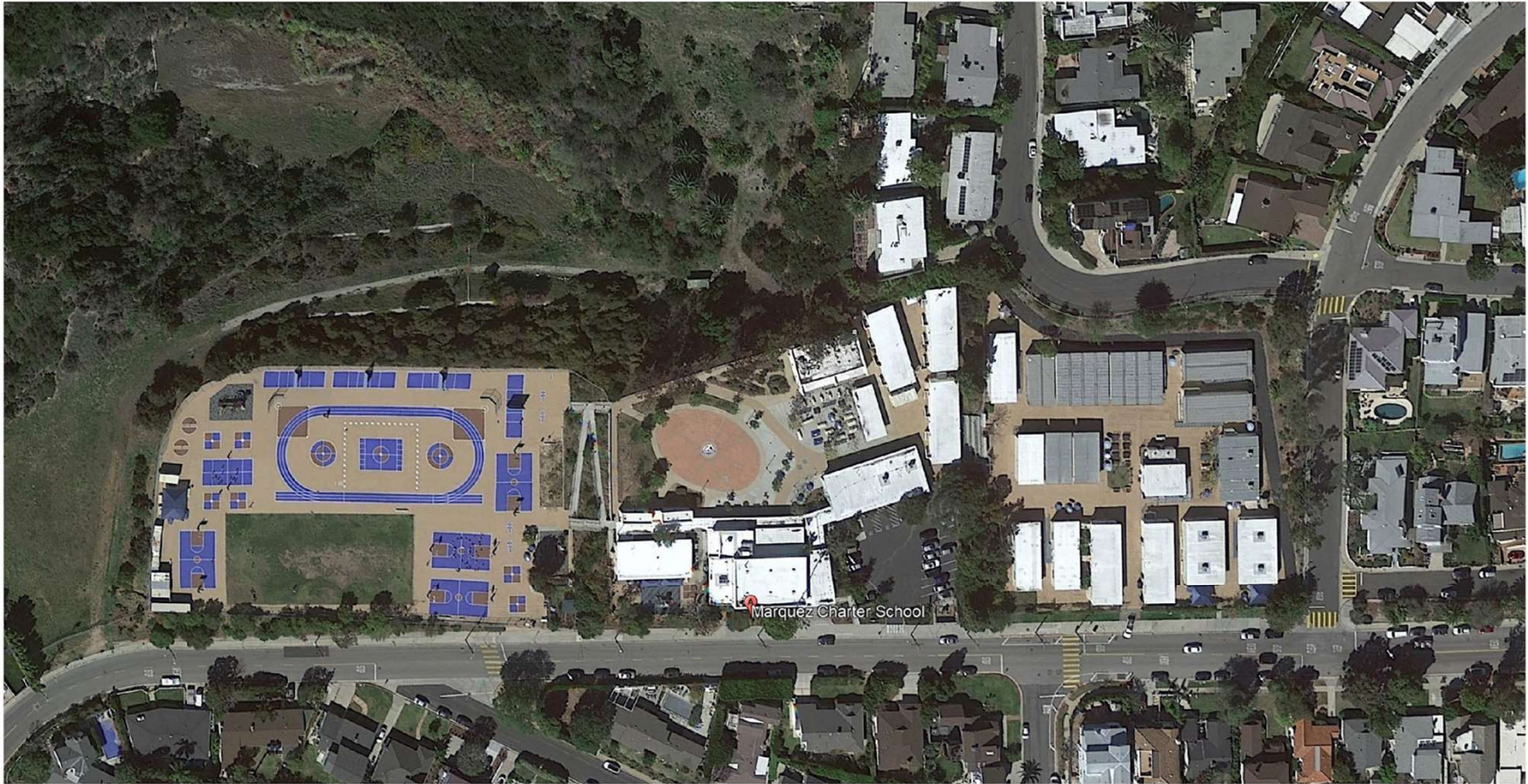
MARQUEZ CAMPUS - 1989
FIRST EXPANSION WITH TEMPORARY CLASSROOMS



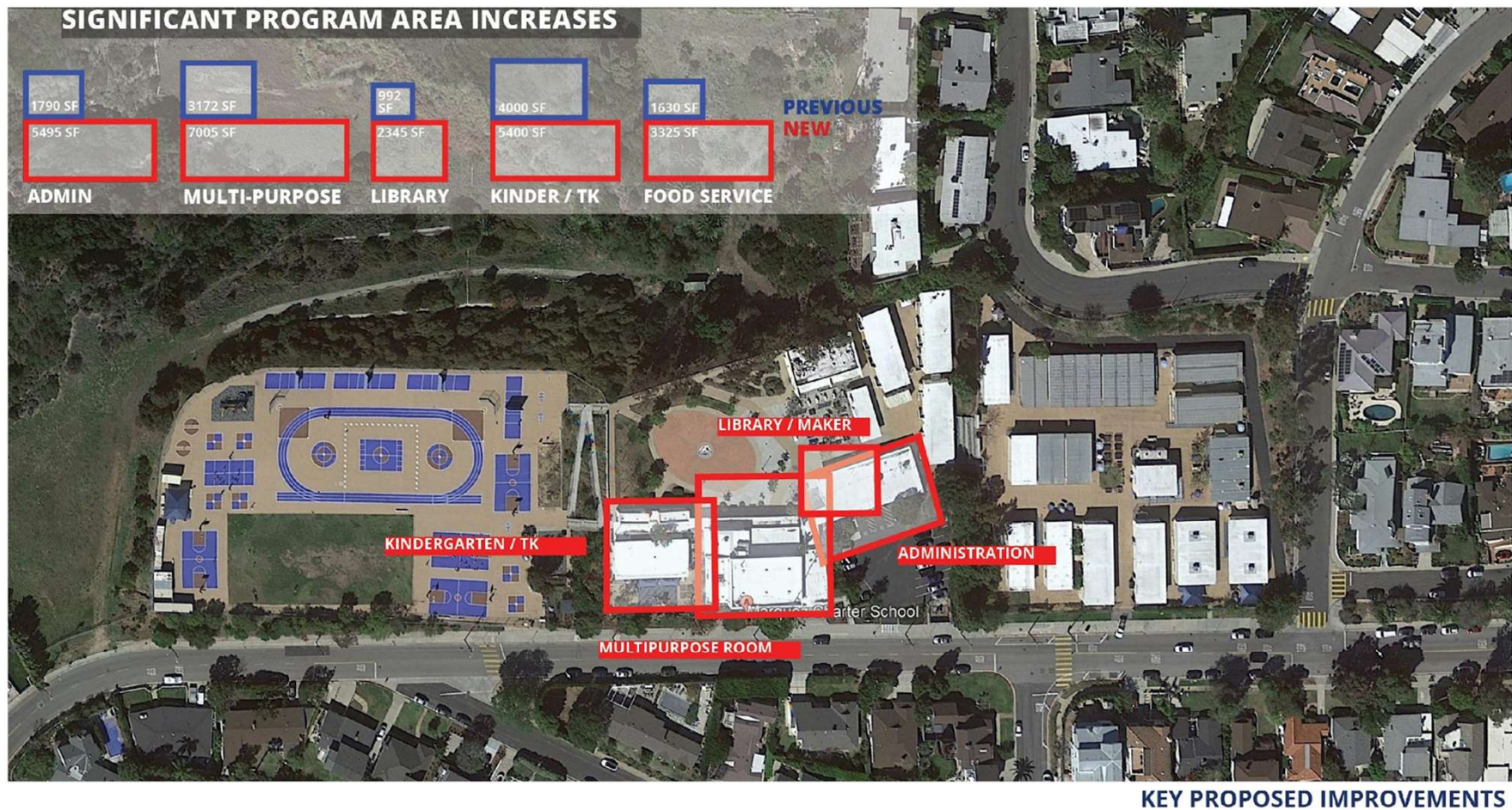
MARQUEZ CAMPUS - 2012



MARQUEZ CAMPUS - 2016

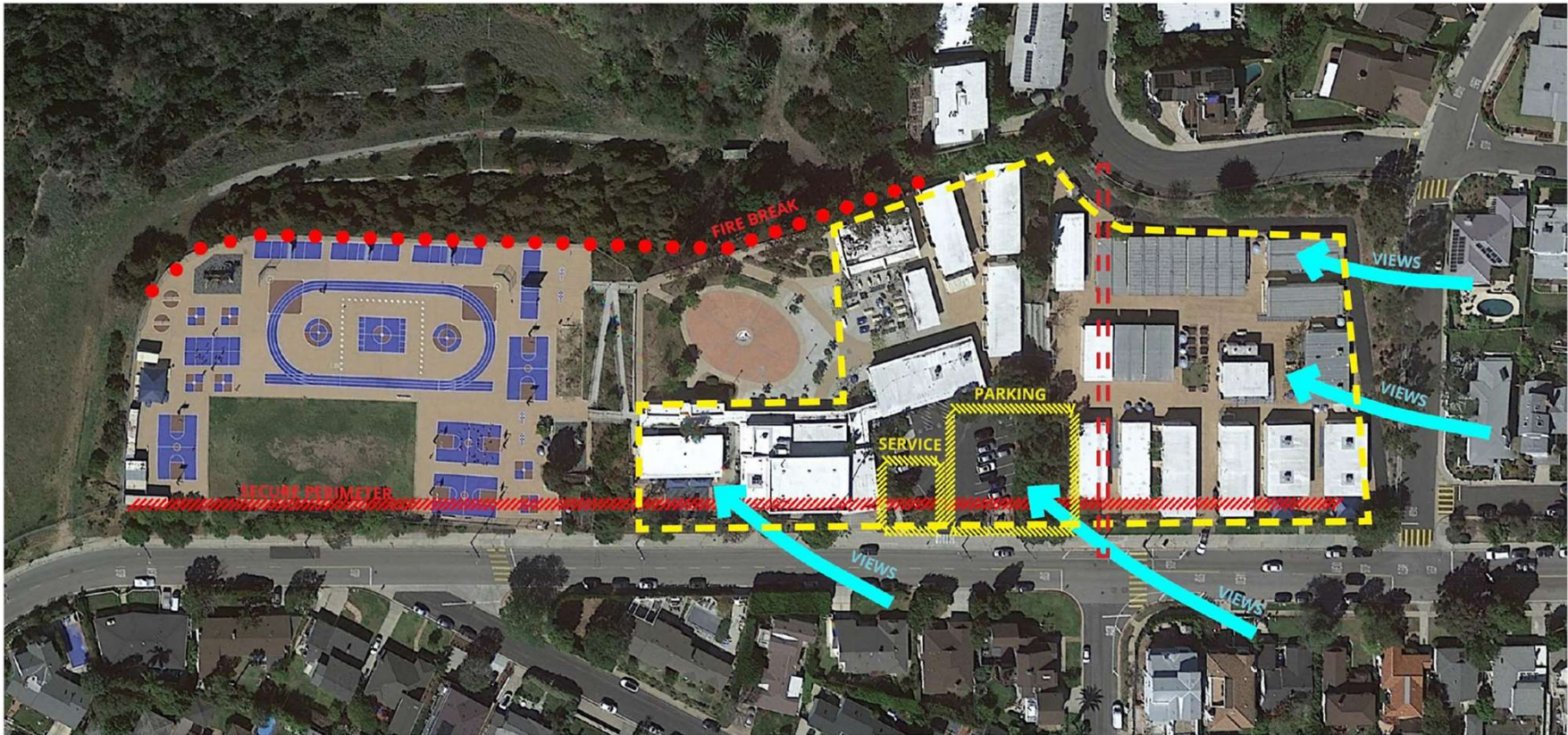


MARQUEZ CAMPUS - 2022





OPEN SPACE CONNECTIVITY

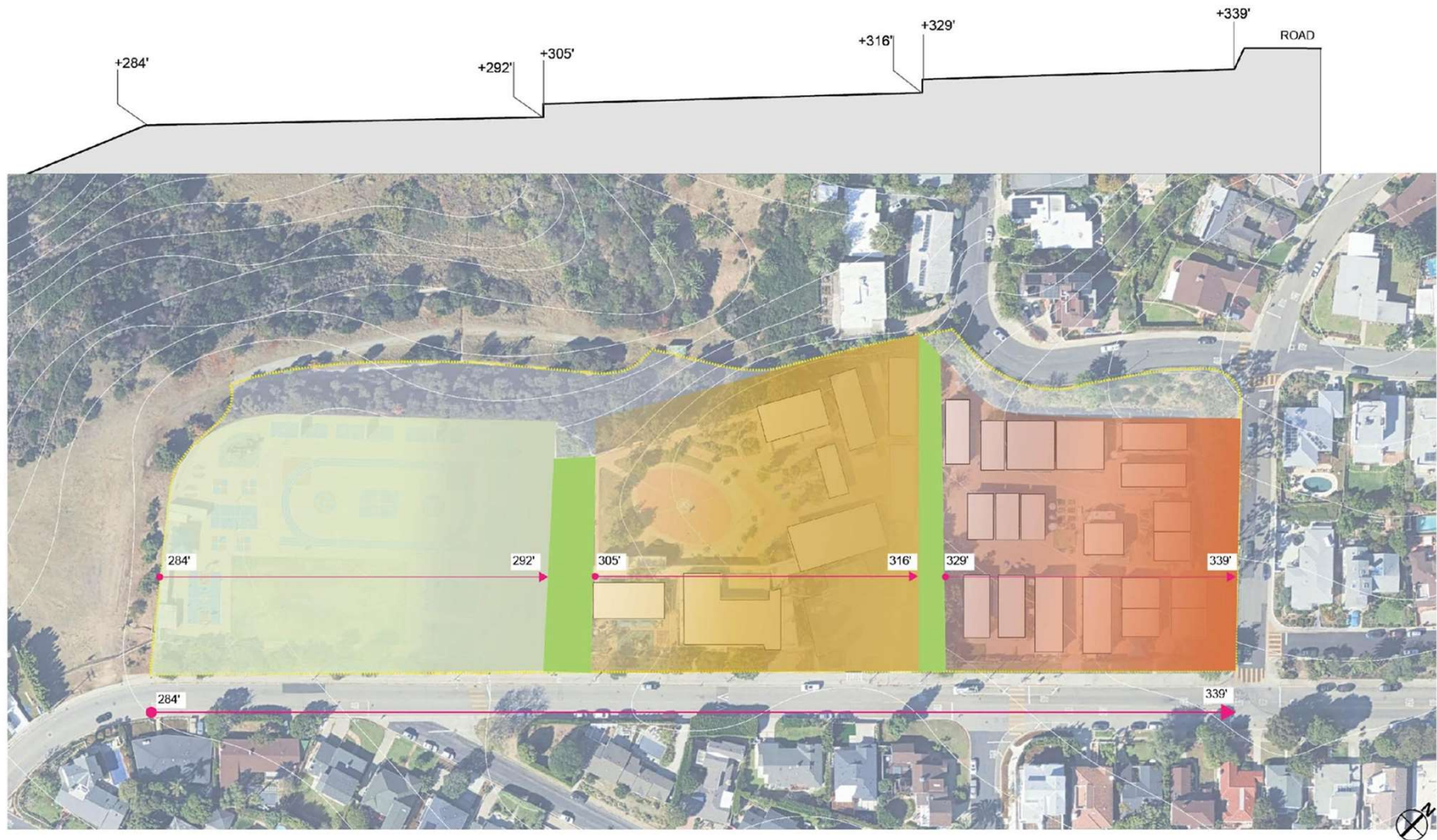


SIGHT CONSTRAINTS & STUDY ASSUMPTIONS

- Buildable area includes entire upper level and southern and eastern portions of middle level
- Parking: ~ 24 spaces or more
- Play area on lower level



NAC









Design / Planning Principles

- Restore Marquez campus culture.
- Child-scale, minimize height and two-story structures.
- Indoor / outdoor connection.
- Leverage outdoor circulation, engage nature.
- Improve circulation, level transitions, accessibility.
- Embrace technology and programmatic enhancements.
- Establish strong entry identity, restore Marquez tile mural.





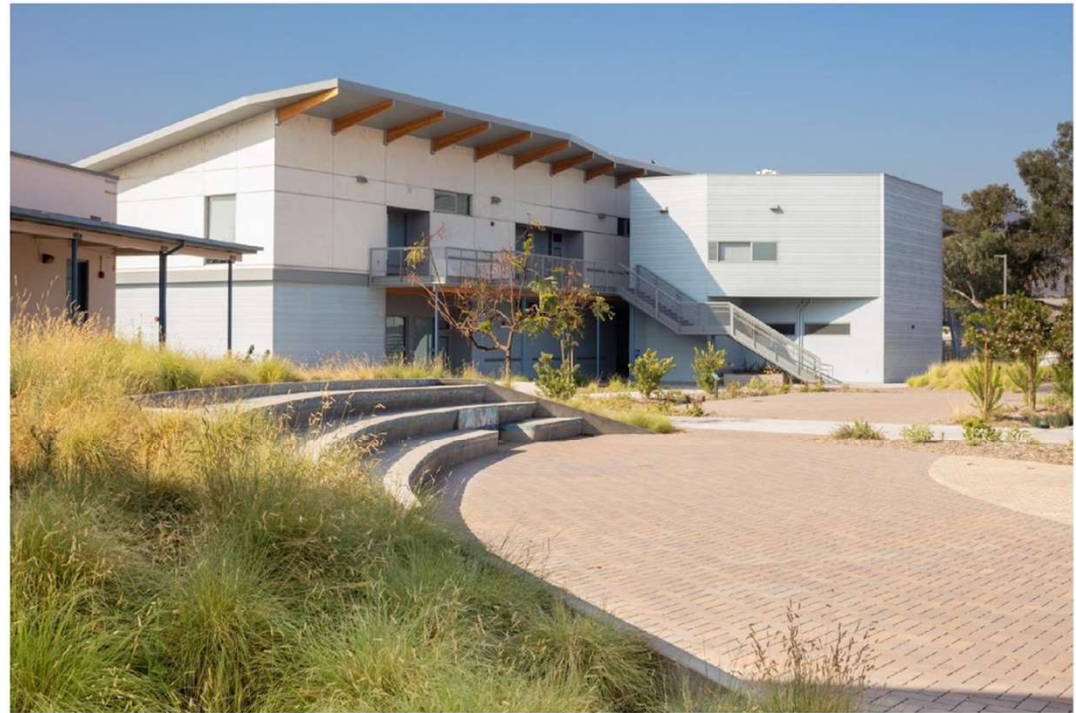
THE SECRET GARDEN *Classrooms gather around a protected, outdoor play/learn space on the upper level, creating a verdant and inward-focused collective space*



Enclosed communal space

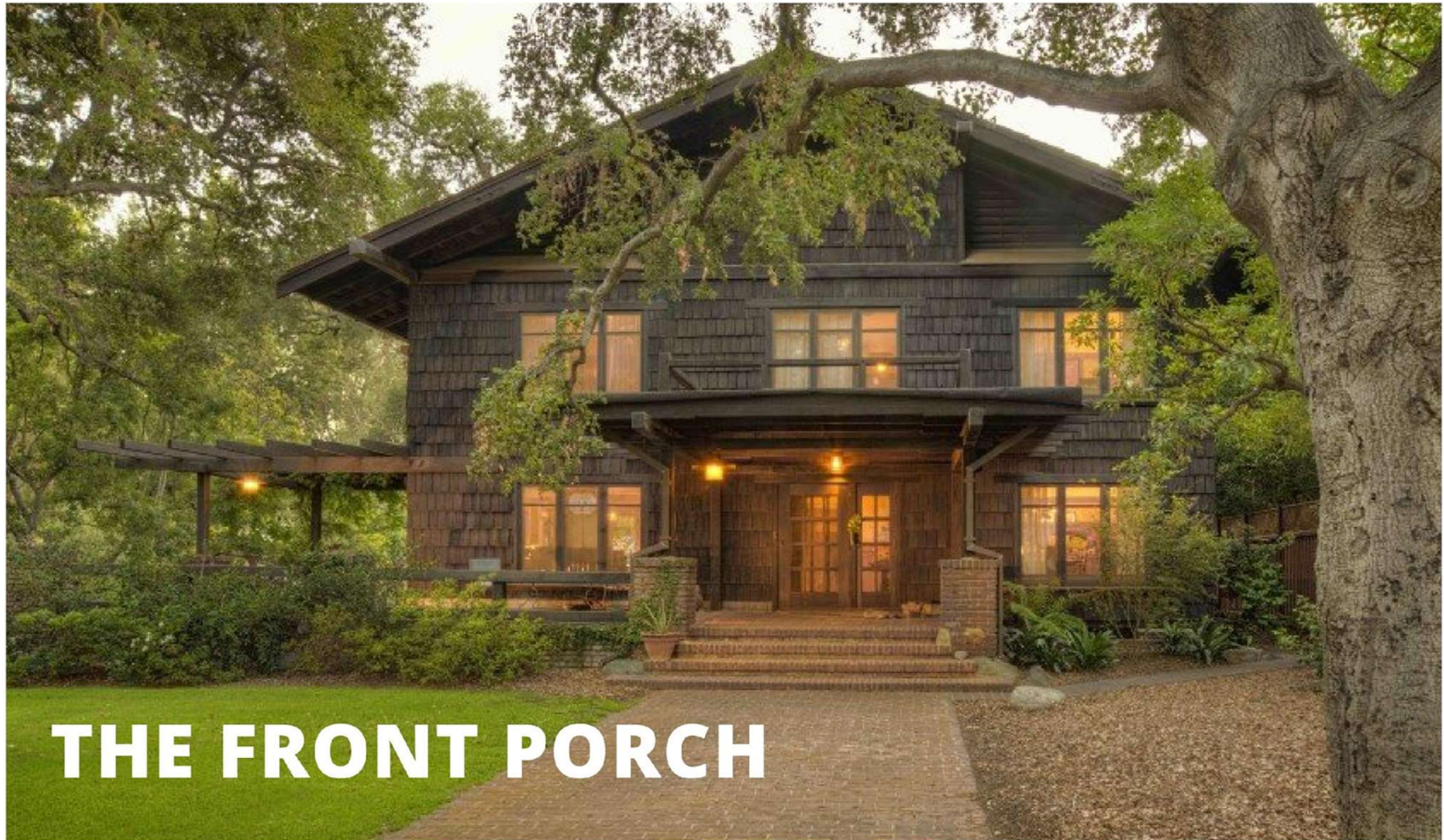


Play and learn integrated in the garden





Every classroom
has a green view





THE FRONT PORCH *A covered indoor/outdoor zone running the length of the building creates an active, flexible play/learn space between classrooms and yard*

Porous middle zone between class and front yard





Transition terraces
connect upper and lower
common spaces

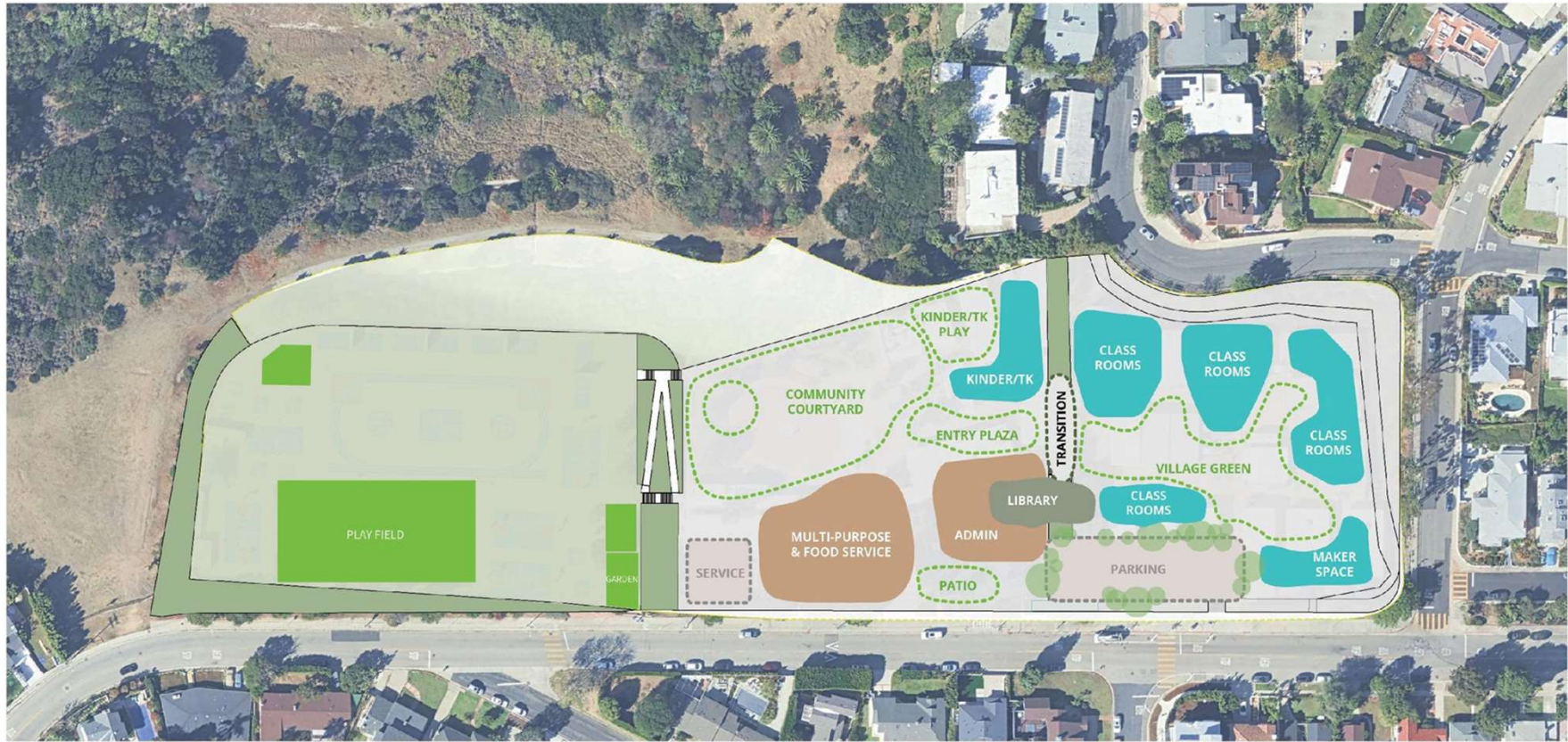




Bi-level learning, gathering and performance



THE VILLAGE GREEN

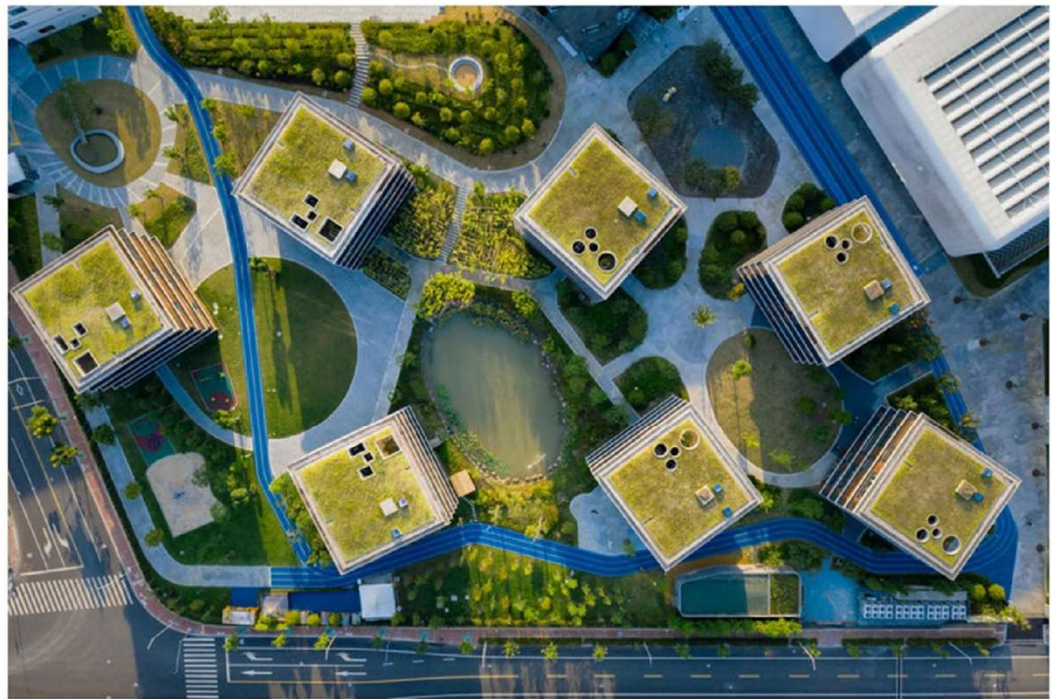


THE VILLAGE GREEN *A snaking roof ties together cozy clusters gathered around “cul-de-sacs” of shared open space*



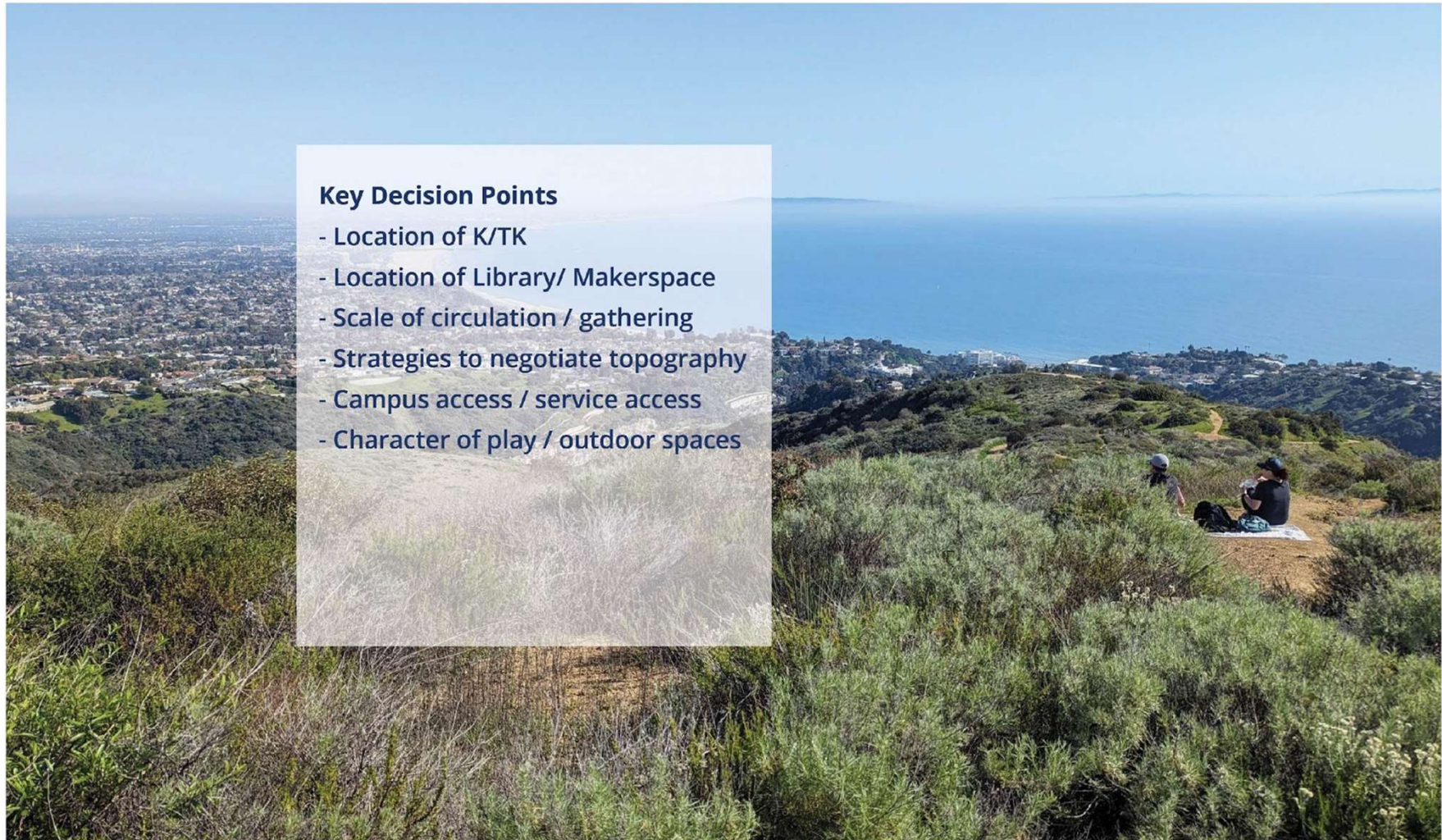
Clusters of classes
nested under one roof

Micro-greens around a larger yard





Common spaces with connection to outside



Key Decision Points

- Location of K/TK
- Location of Library/ Makerspace
- Scale of circulation / gathering
- Strategies to negotiate topography
- Campus access / service access
- Character of play / outdoor spaces

Submit questions by
scanning the QR code.



FSD Community Relations Department: 213 241-1340

community.relations@laschools.org

<https://www.lausd.org/facilities/community-relations>

Closing Remarks

We appreciate your interest, participation, and support as **unified** we move forward in rebuilding the Palisades community schools.

Should you have any questions, concerns, or wish to provide other input or feedback to Region West Operations, please send an email to:

FireRecoveryWest@lausd.net

Should you have any questions, concerns, or wish to provide other input or feedback to Facilities reconstruction projects, please send an email to:

community.relations@laschools.org

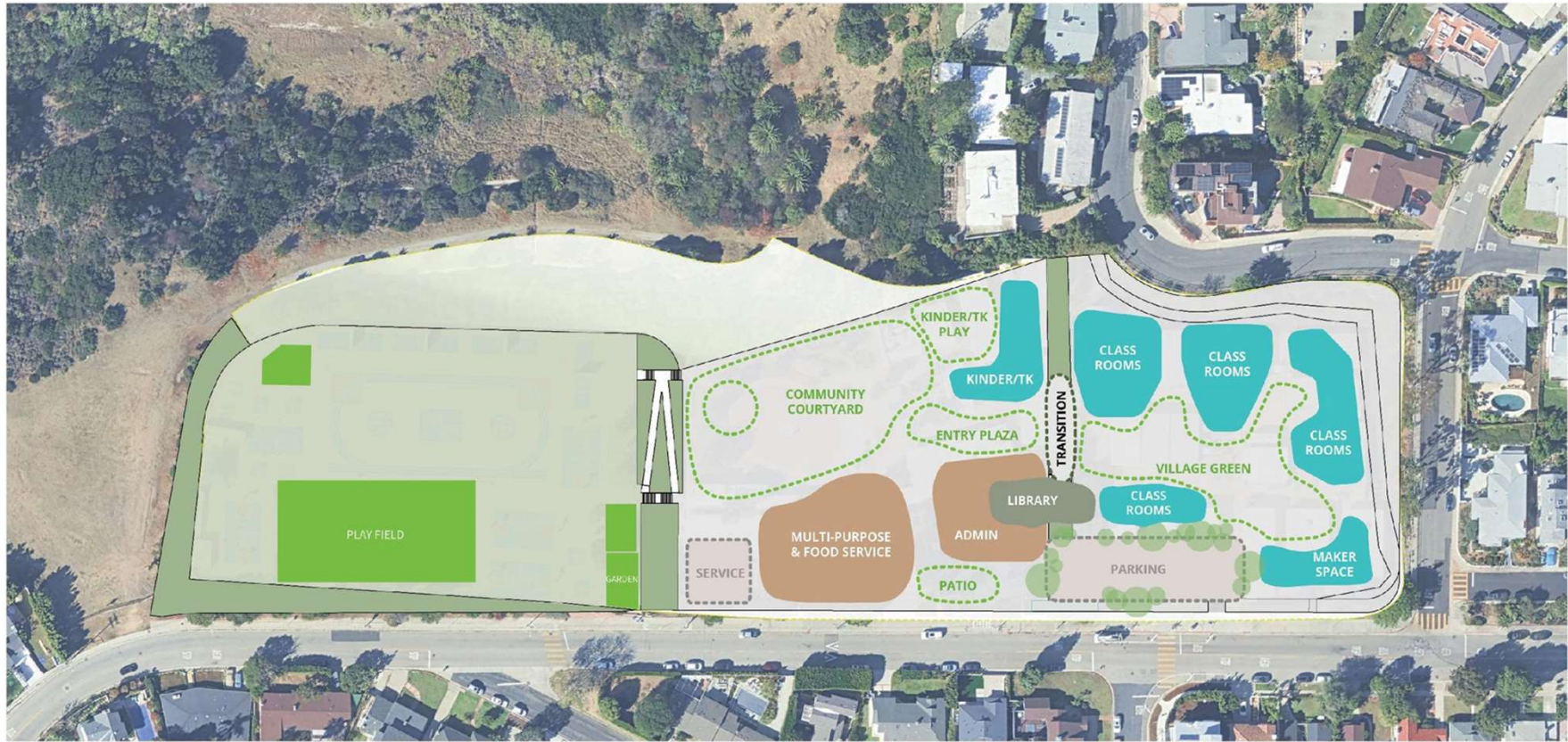
Thank you!



THE SECRET GARDEN *Classrooms gather around a protected, outdoor play/learn space on the upper level, creating a verdant and inward-focused collective space*



THE FRONT PORCH *A covered indoor/outdoor zone running the length of the building creates an active, flexible play/learn space between classrooms and yard*



THE VILLAGE GREEN *A snaking roof ties together cozy clusters gathered around “cul-de-sacs” of shared open space*